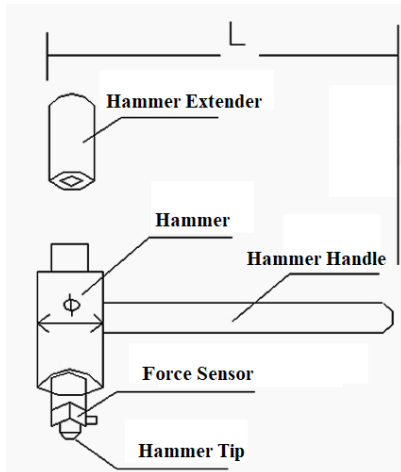
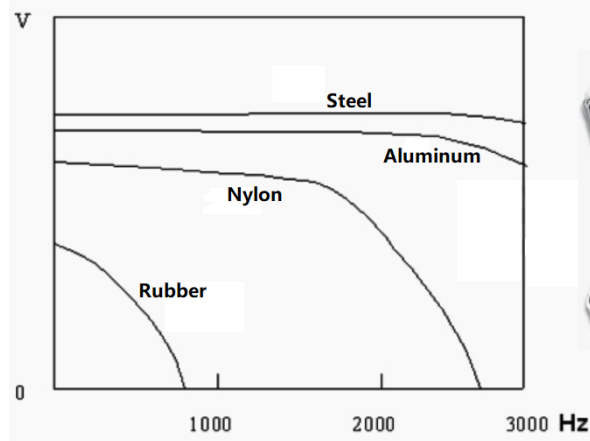


Specifications:

Model	LC-01A	LC-02A	LC-04A
			
Measurement Range	2 kN	5 kN	60 kN
Sensitivity	4 pC/N	4 pC/N	4 pC/N
Hammer Mass	40 g	200 g	300 g
Hammer Extender Mass	100 g	120 g	150 g
Head Diameter	Φ16	Φ25	Φ30
Handle Length	250 mm	280 mm	300 mm
Force Sensor Model	CL-YD-303	CL-YD-312A	CL-YD-305
Calibration Certificate	Included		
Accessories	<ol style="list-style-type: none"> 1. Hammer Tips: Steel, Aluminum, Rubber, Nylon 2. Hammer Extender 3. 2 m L5-to-BNC or BNC-to-BNC cable 4. Tool case 		



Structure Diagram



Typical frequency response with different hammer tips
(Pulse width and frequency response vary with hammer tip materials)

