

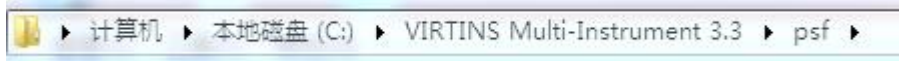
LCR Meter using VT DSO-2810E, 2820E

- Put the following files into the respective subdirectories under the software root directory

File 1: LCR2810Edefault.psf

File 2: Z2810Edefault.psf

To be put under



File3:LCRdefault.dtp

File4:Zscdefault.dtp

File6:Inductordefault.dtp

To be put under

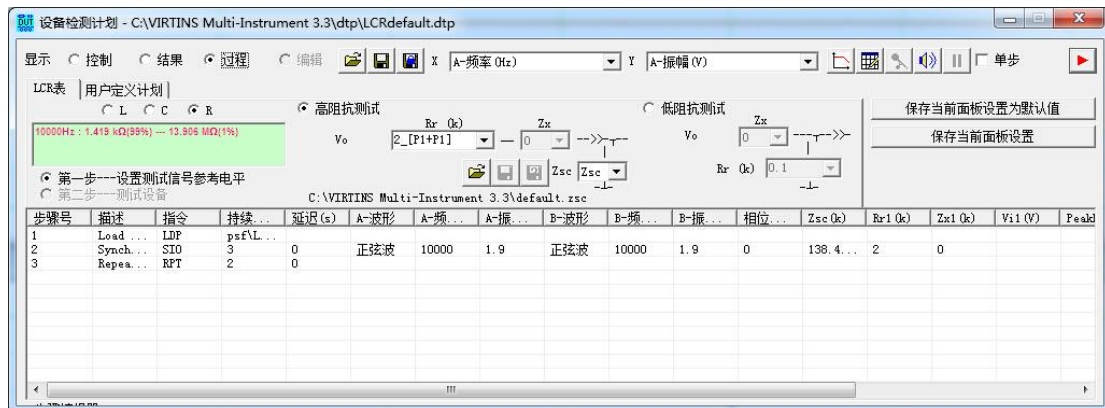


File5:default.zsc

To be put under



- Launch MI and open the LCR window.



- Choose “High Impedance Measurement” and enter “0.05” (output impedance of the signal generator) at Rr. Then connect the oscilloscope probe (switch position at x 1) for channel A directly to the test lead of the signal generator. Press the Start/Stop button at the upper right corner of the LCR Meter to run it. This is to set the test tone reference level (Step1).

[illegible][illegible]